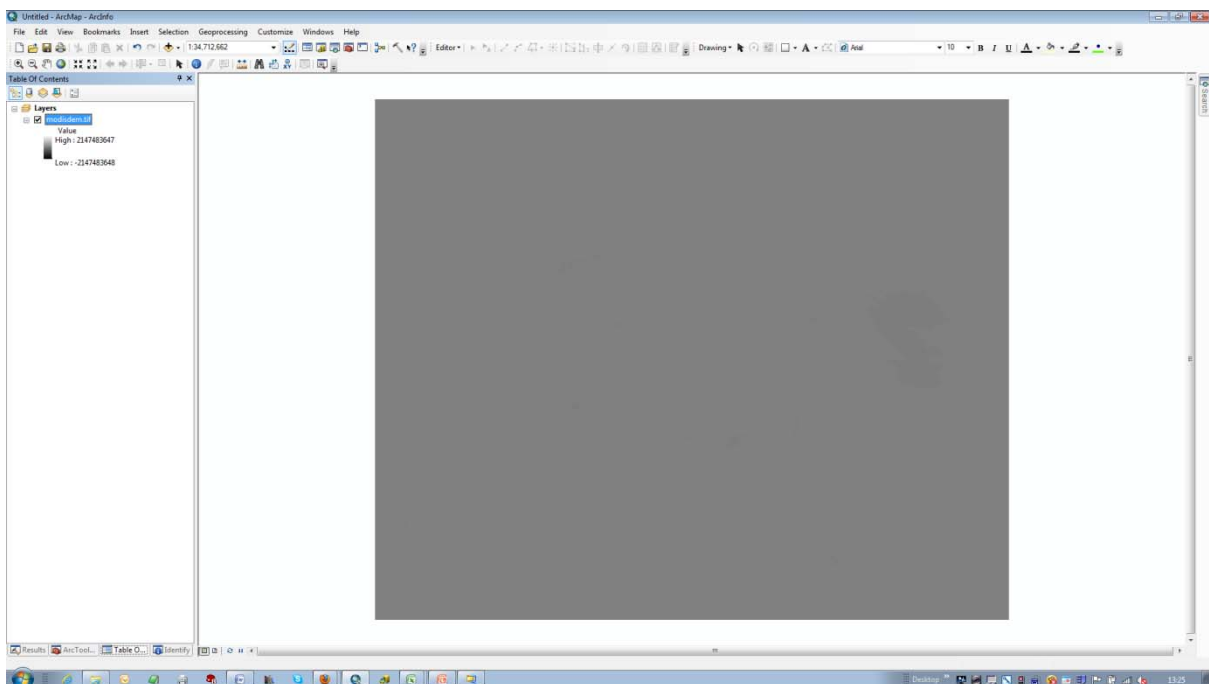
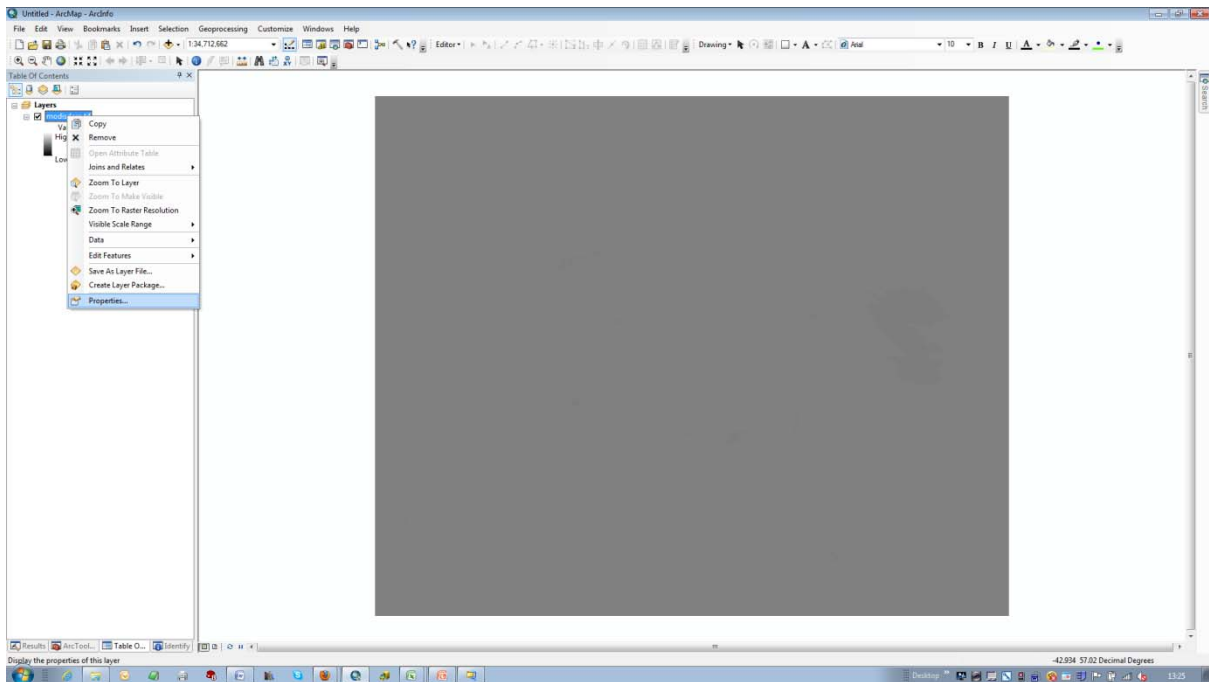


Downloading and displaying TIFF Data from the EDENext Data Site

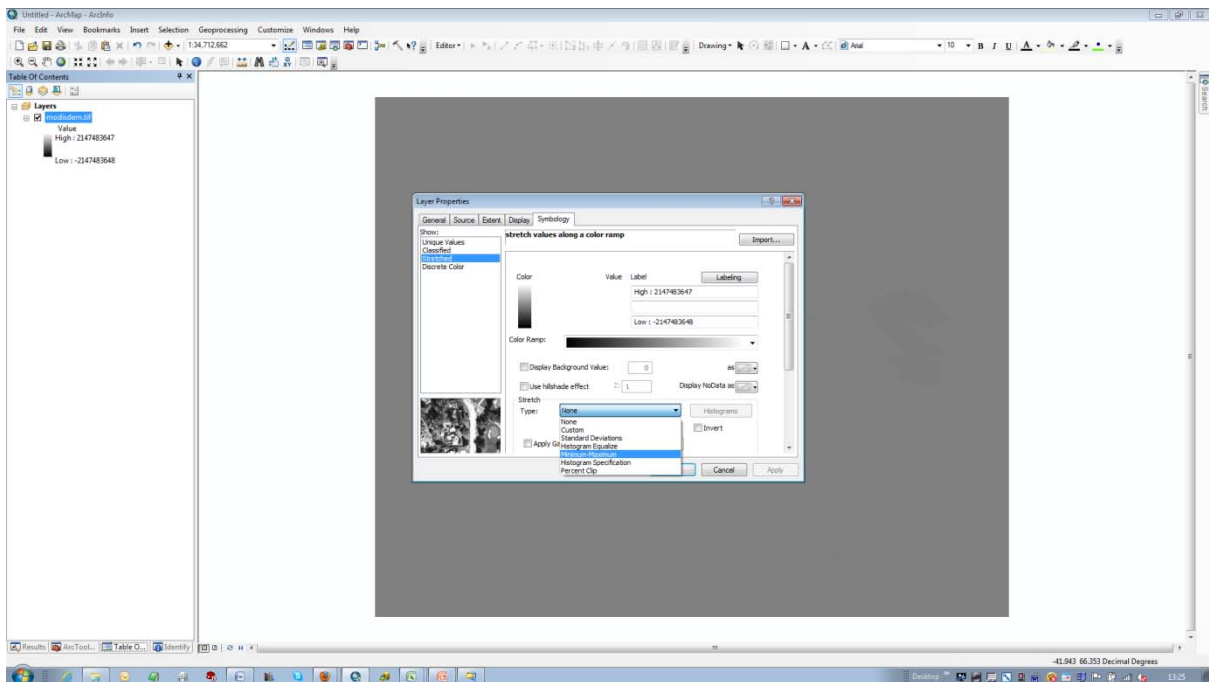
If you download a tif format raster file from the Edenext Data website. Some programmes will initially display it as a blank square, like the picture below, which is elevation, displayed in ArcMap. It looks like this because it assumes that the upper and lower limits for file values are the largest possible (in this case +/-2147M!). As the actual maximum is 5402, and the minimum is -418, this relatively narrow range cannot be distinguished until the real limits are understood by the programme.



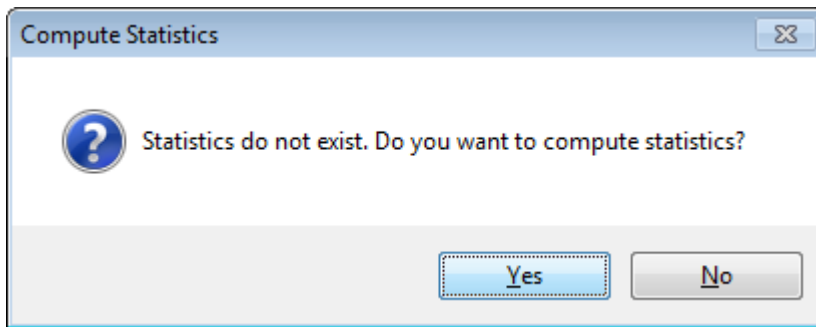
To do this in ArcMap right click on the layer name, and left click on Properties



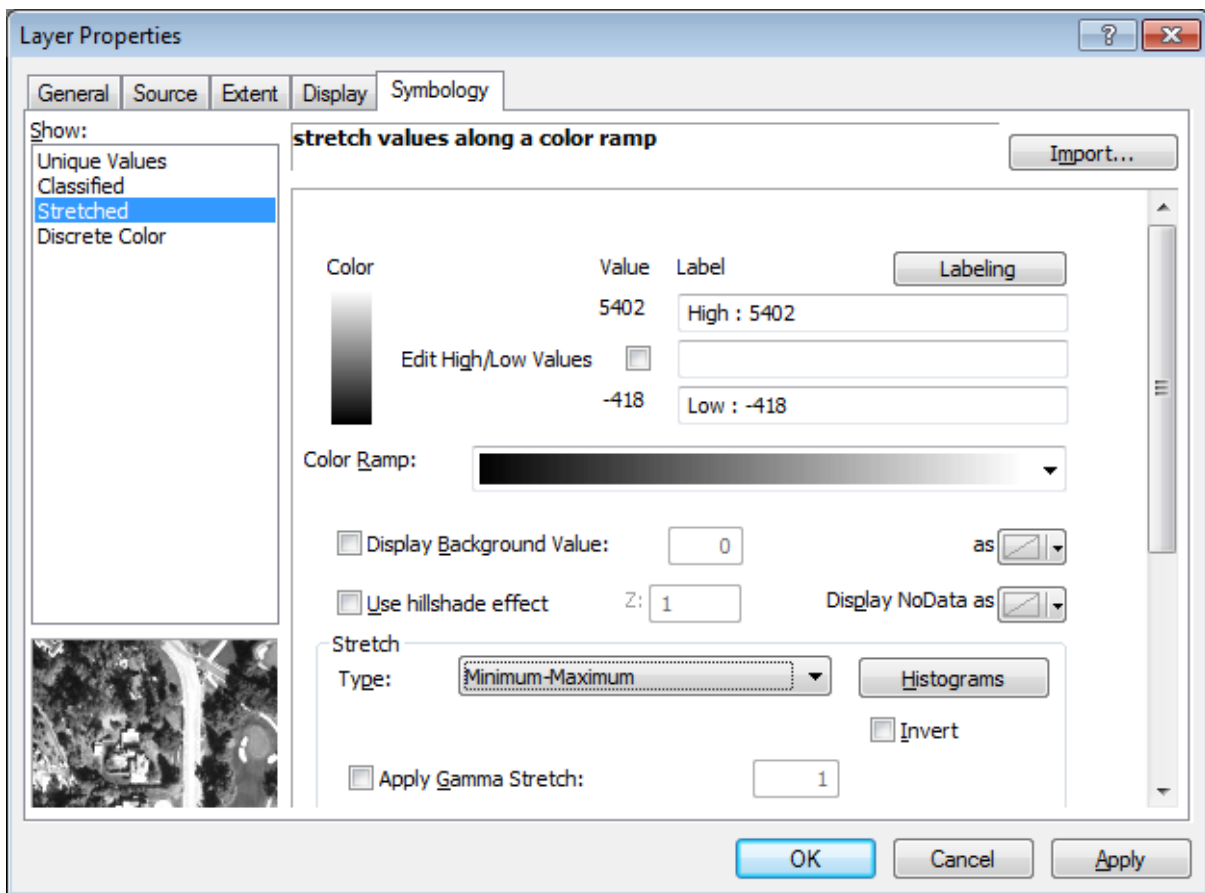
This will bring up a Layer Properties dialogue box, which can be used to identify and record the actual image value limits, by selecting the Symbology Tab, clicking on the Type dropdown list, then highlighting and clicking on Maximum-Minimum.



A box will appear asking if you want to compute statistics. Click on Yes, but be aware that for large images the process can take quite a long time.



Once the statistics have been computed, the values will be shown in the Layer Properties Dialogue Symbology Tab.



Click OK, and these new limits will be applied to the Image, and you will now be able to see the map properly.

